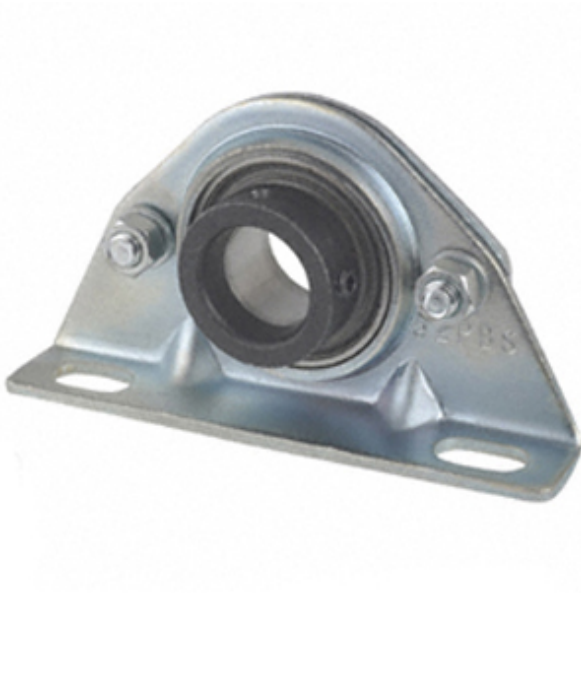




Timken Making Bearings LTD



1.25 Inch | 31.75 Millimeter x 0 Inch | 0
 Millimeter x 1.875 Inch | 47.63 Millimeter Timken
 PBS1 1/4 Pillow Block Ball Bearing Units

Bearing No. PBS1 1/4

PBS1 1/4 Bearing 2D drawings and 3D CAD models

Category	Pillow Block Bearings
Inventory	0.0
Manufacturer Name	TIMKEN
Minimum Buy Quantity	N/A
Weight	1.09
EAN	0087796058446
Product Group	M06110
Number of Mounting Holes	2
Mounting Method	Eccentric Collar
Housing Style	2 Bolt Pillow Block
Rolling Element	Ball Bearing
Housing Material	Zinc Coated Stamped Steel
Expansion / Non-expansion	Non-expansion
Relubricatable	No
Insert Part Number	RA104RRB
Seals	Double Land Riding Rubber Contact
Housing Configuration	1 Piece Solid
Inch - Metric	Inch
Other Features	Single Row Spherical Light Duty With Set Screw
Long Description	2 Bolt Pillow Block; 1-1/4" Bore; 1-7/8" Base to Center Height; Eccentric Collar Mount; Ball Bearing; No Relubricatable; Zinc Coated Stamped Steel; Double Land



Timken Making Bearings LTD

	Riding Rubber Contact; Non-exp
Category	Pillow Block
UNSPSC	31171511
Harmonized Tariff Code	8483.20.40.40
Noun	Bearing
Keyword String	Pillow Block
Manufacturer URL	http://www.timken.com
Manufacturer Item Number	PBS 1 1/4
Weight / LBS	2.4
Nominal Bolt Center to Center	5 Inch 127 Millimeter
D	0 Inch 0 Millimeter
Actual Bolt Center to Center	5 Inch 127 Millimeter
d	1.25 Inch 31.75 Millimeter
B	1.875 Inch 47.63 Millimeter
Bolt Spacing Minimum	0 Inch 0 Millimeter
Bolt Spacing Maximum	0 Inch 0 Millimeter